

Healthcare for people with learning disabilities - recommendations of Parliamentary & Health Services Ombudsman

Background

Healthcare for people with learning disabilities was under scrutiny following a number of reports:

Sir Jonathans Michael's Independent inquiry *'Healthcare for All'* (2008)

Parliamentary & Health Services & Local Government Ombudsman *'Six Lives'* (2009) followed the Mencap report *'Death by Indifference'* (2007)

These reports included recommendations for both PCT & the Local Authority



So what did these reports say

People with a learning disability have:-

- Significantly worse health than others
- Higher levels of unmet need & receive less effective treatment
- Parents and carers often had their options ignored
- Staff have limited knowledge about learning disabilities
- Partnership working between different agencies was poor

What happen then



- Sir David Nicolson wrote to all NHS & SHA in June 2008 saying boards must satisfy themselves that services are making reasonable adjustments
- In March 2009, the ombudsmen recommended that all NHS & Social Care organisations should urgently review the effectiveness and capability of the services they provide. Reporting to those responsible for the governance of those organisations by March 2010

How will this information be shared

A self assessment framework reporting structure was produced, this process would allow the NHS to assess progress against the ombudsman recommendations:

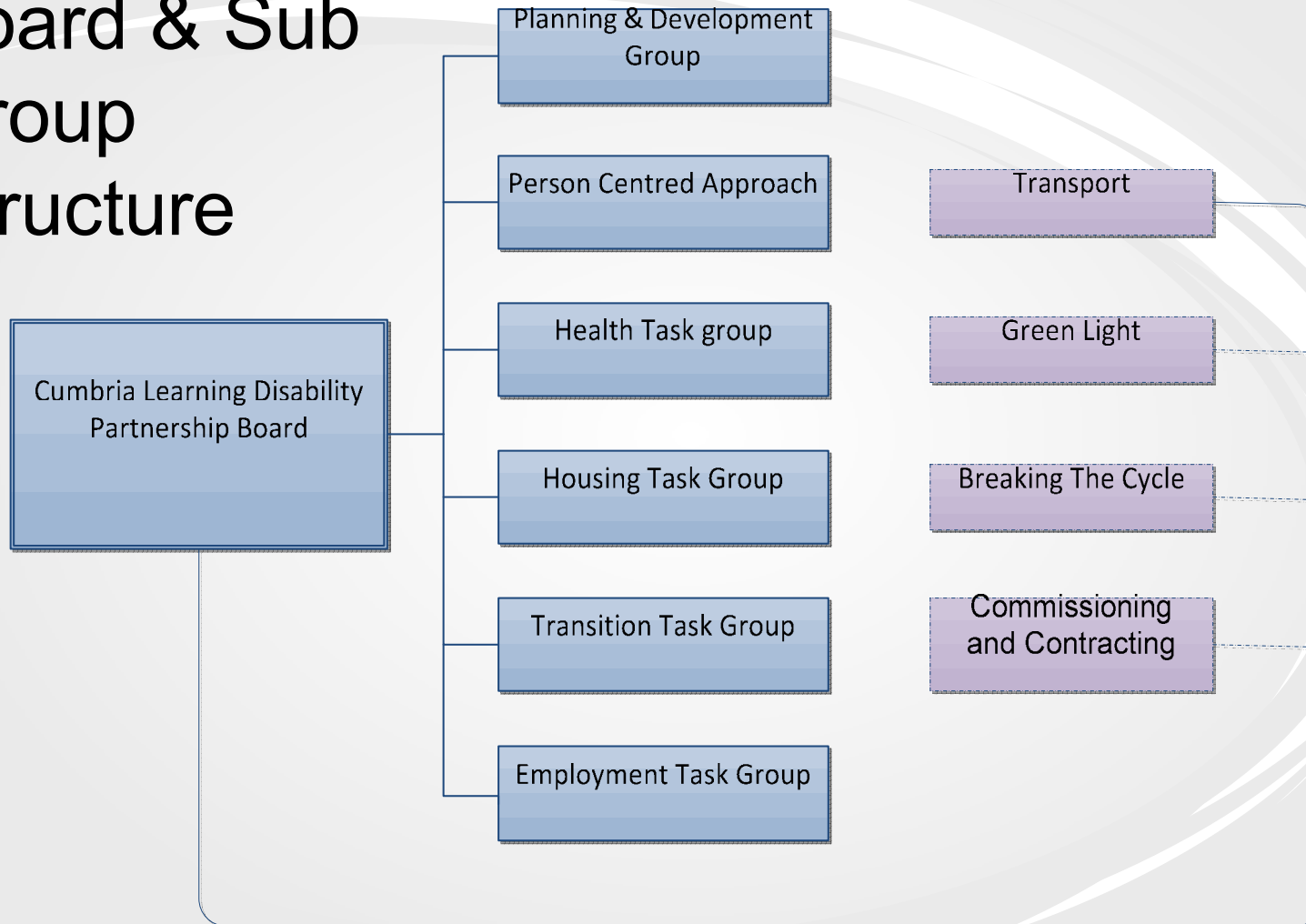
- Valuing People Now: Partnership Board annual self-assessment
- Learning Disability Performance and Health self-assessment framework
- Both of these processes when validated will be a useful benchmarking tool across the North West
- However these have not been fully validated and we are not at a stage where there is meaningful data or reports have been produced

So what is Cumbria doing



- In Cumbria we have a Learning Disability Partnership Board. The Board checks the delivery of Valuing People objectives and Health Care for All
- In 2008 *KoZan* consultants carried out a comprehensive review of all services 'Cumbria Checks In'
- In 2009 Partnership Boards agreed to write a new Strategic Commissioning Intentions Strategy
- The Partnership Board structure will check the delivery of the Commissioning Intentions Strategy by the themed agendas and progress being made through the sub-groups

Partnership Board & Sub Group Structure



Health Sub Group



This group currently covers four main areas

- Acute access and hospital passport – supporting people with LD to have a better experience of healthcare services
- Annual health check and health action plans – supporting people with LD to identify health issues, manage these or change their own health with support
- Green-light- making sure people with a learning disability and mental health issues get the right support from mental health services
- Health self-assessment – Has been submitted to North West Joint Improvement Partnership. All Primary Care Trust's in the NW have complete a health self- assessment

Acute Access



- There is a protocol in place in the North of the County and there is one being developed in the South
- There is a hospital passport which is designed to support people who have to go into hospital
- Training has been happening in the both the North and West acute services for staff to raise awareness of people with LD

What are the issues

- Some people say they don't know about the passport
- We are going to target groups about the passport and protocol
- Make sure there are different places where people can get the passport




Annual Health Checks

- People with a Learning Disability can have an annual health check if they want to and a health action plan
- The learning disability teams have been working with practices to identify people on the GP register
- Training sessions have happen to raise awareness of learning disabilities and health action plans

What are the issues

- Not all GP's have signed up to annual health checks
- We need to make sure what we are doing works. So there will be a audit, working with PRIMIS to identify any areas of concern or gaps
- Develop a themed programme for Health and Well-being topics to support people improve their own health



Green-Light

- The Health Sub Group to look at including mental health screening as part of the annual health check
- Mental Health and Learning Disability will work more closely together for people with a mental health problem including those placed out of area

What are the issues

- Making sure those subject to 117 aftercare have the right mental health input
- Themed programme for Health and Well-being will include mental health issues



Health self-assessment

- A letter went to the chief executive which asked PCT's to complete this process
- The health self-assessment looked at all Health services from out of area health provision to primary care services

What are the issues

- The Health Self Assessment feedback session is taking place at the end of November and we will be benchmarked against other Health families



Recommendations

- To note the contents of this report and partnership work in meeting the recommendations set out in “Healthcare for All”
- To note the structure for continued improvement for better healthcare and outcomes for people with learning disabilities
- Ask for your comments on what you would like to see strengthened or actioned

Muriel Nixon

Strategy Development Manager (LD Pooled Fund)

Tele 01228 608319

Muriel.nixon@cumbriapct.nhs.uk